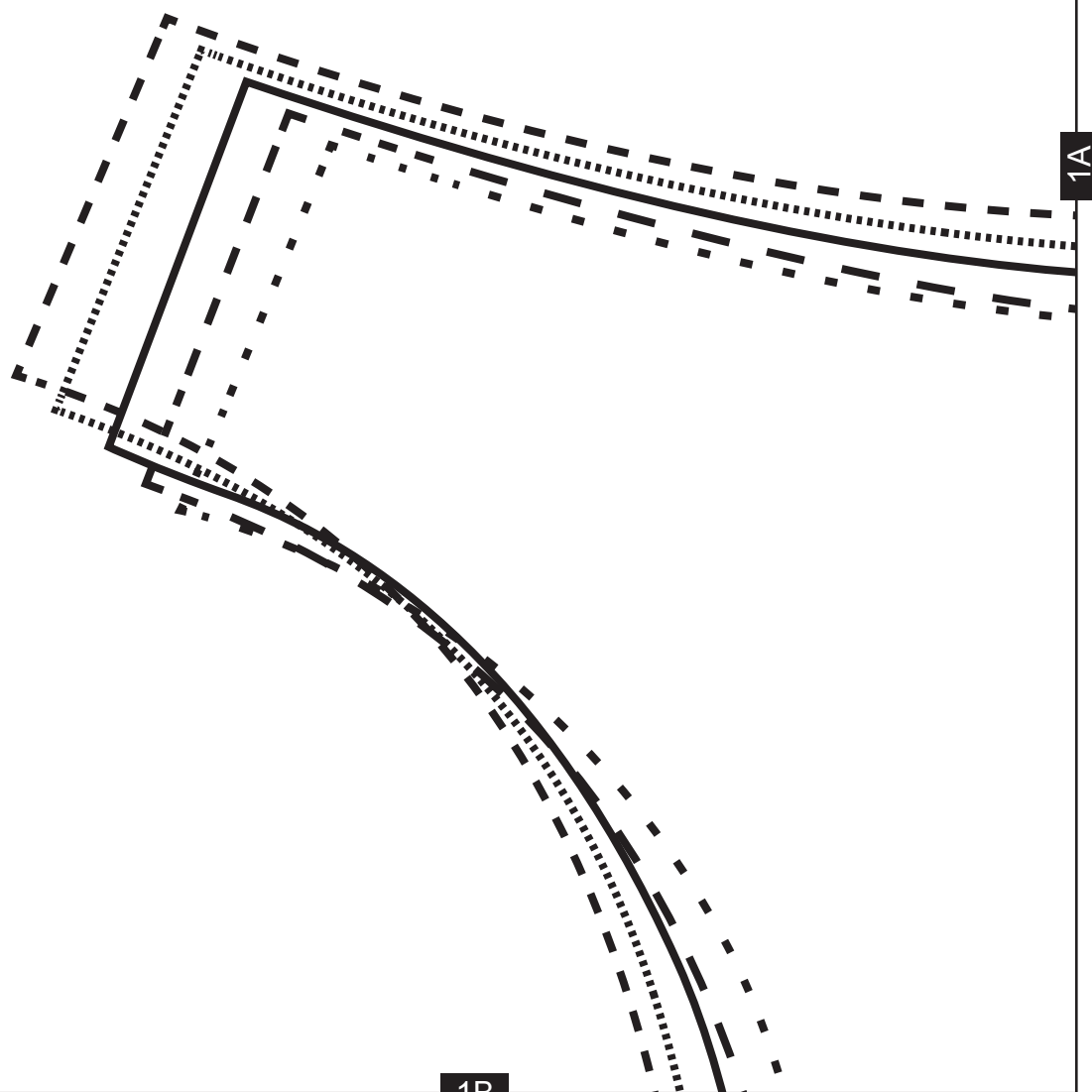


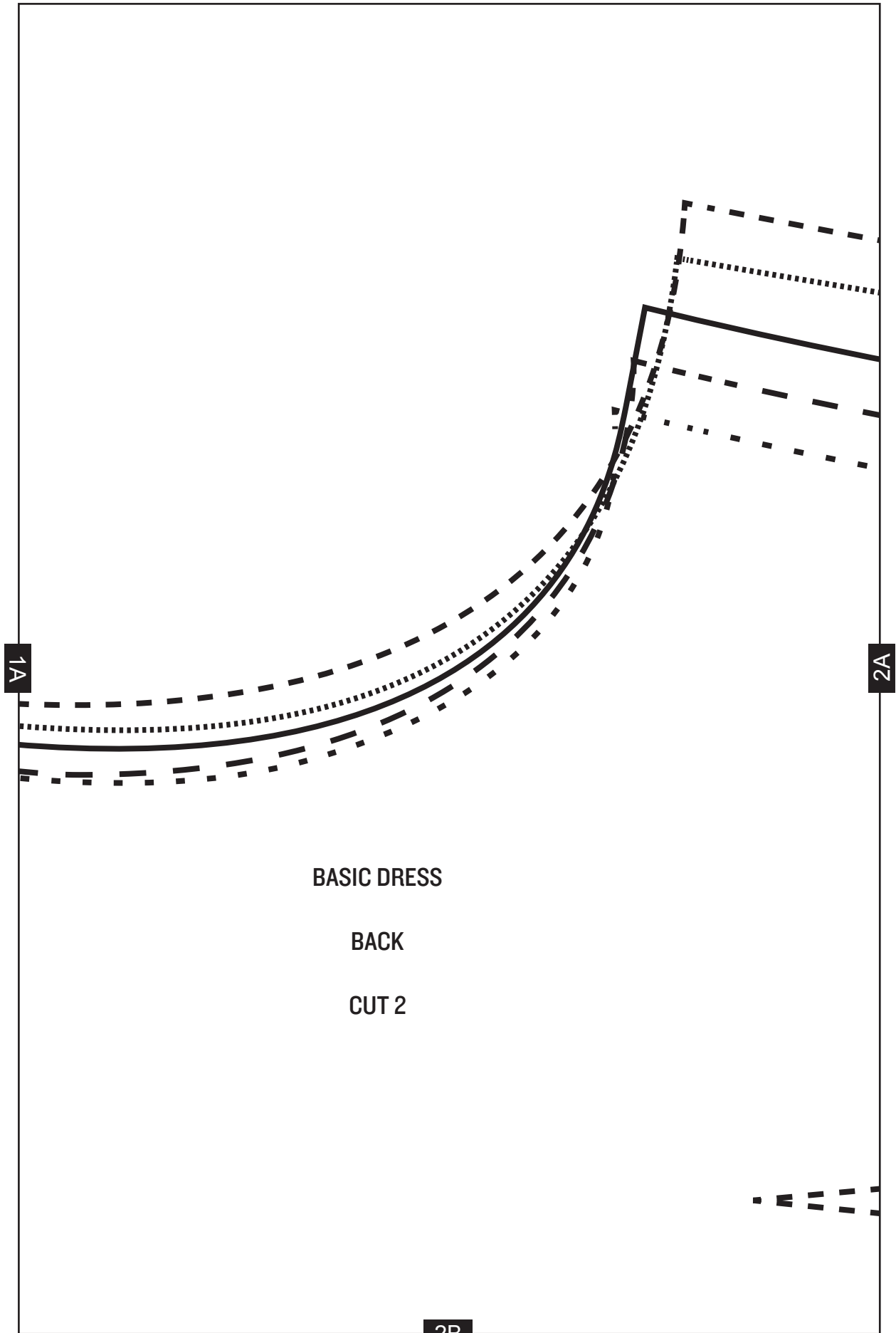
THE GREAT BRITISH *Sewing Bee*

Basic Dress pattern

Project design © Love Productions 2013

This design is protected by copyright
and must not be made for resale.





1A

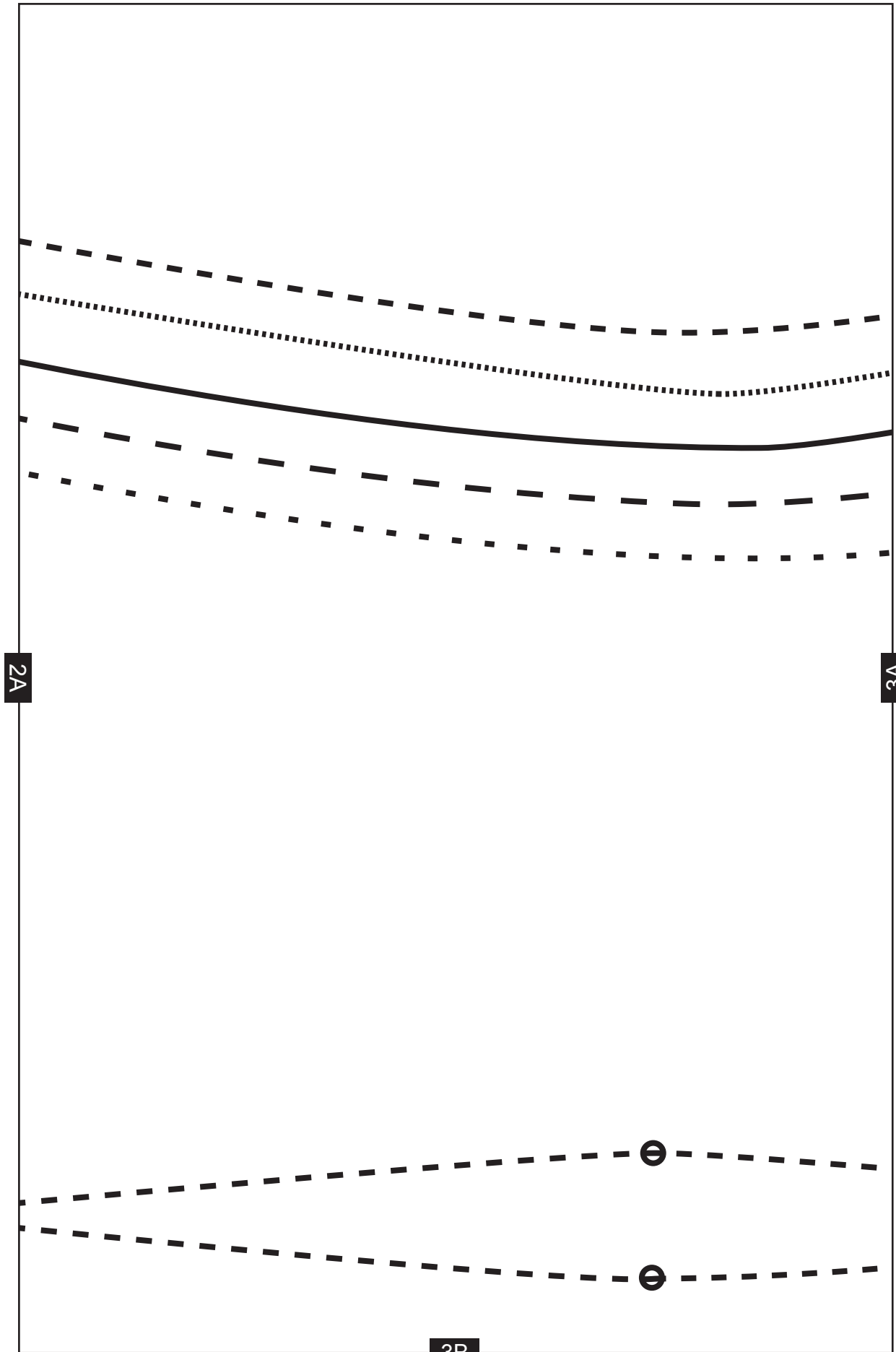
2A

BASIC DRESS

BACK

CUT 2

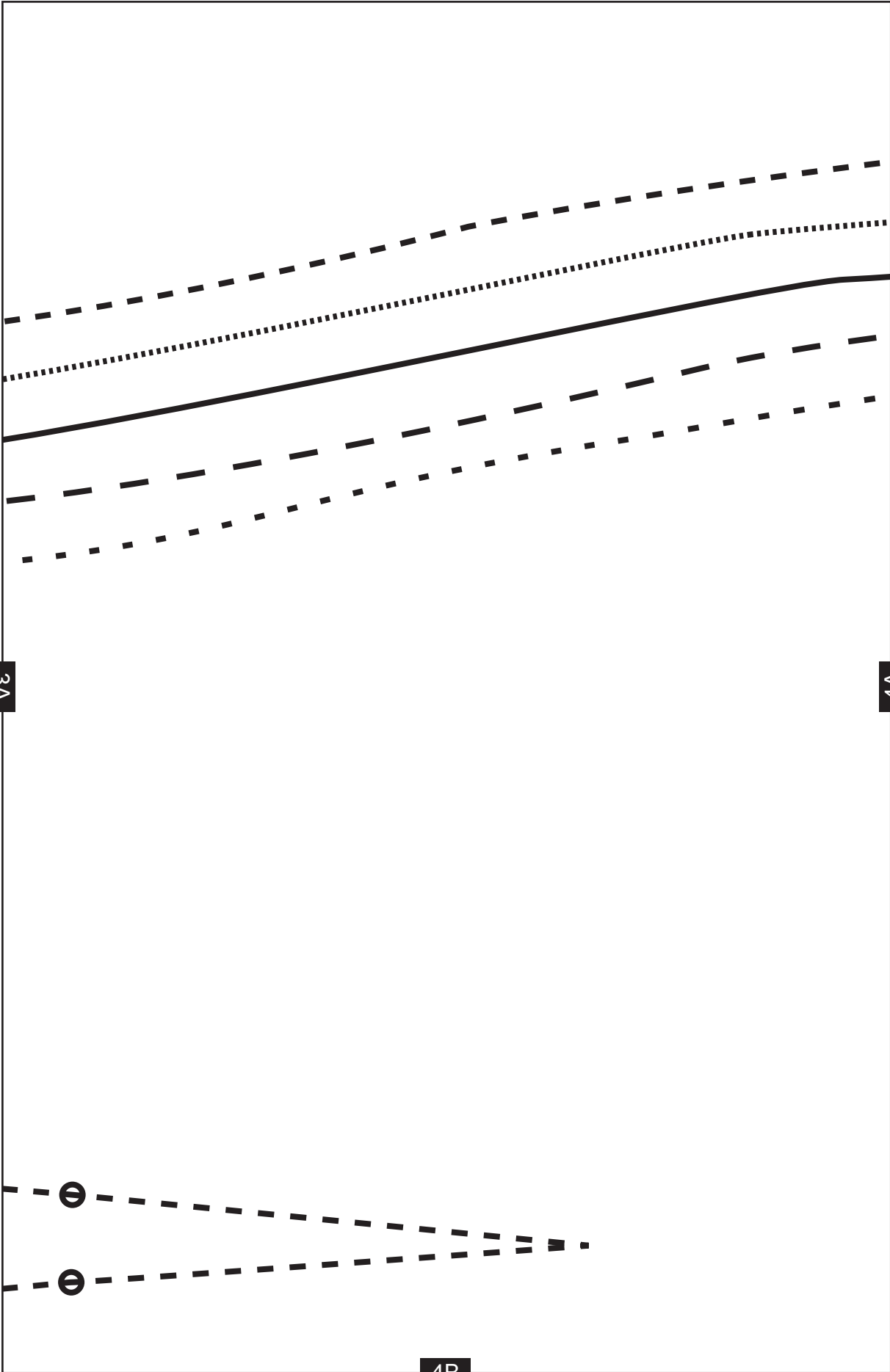
2B



2A

3A

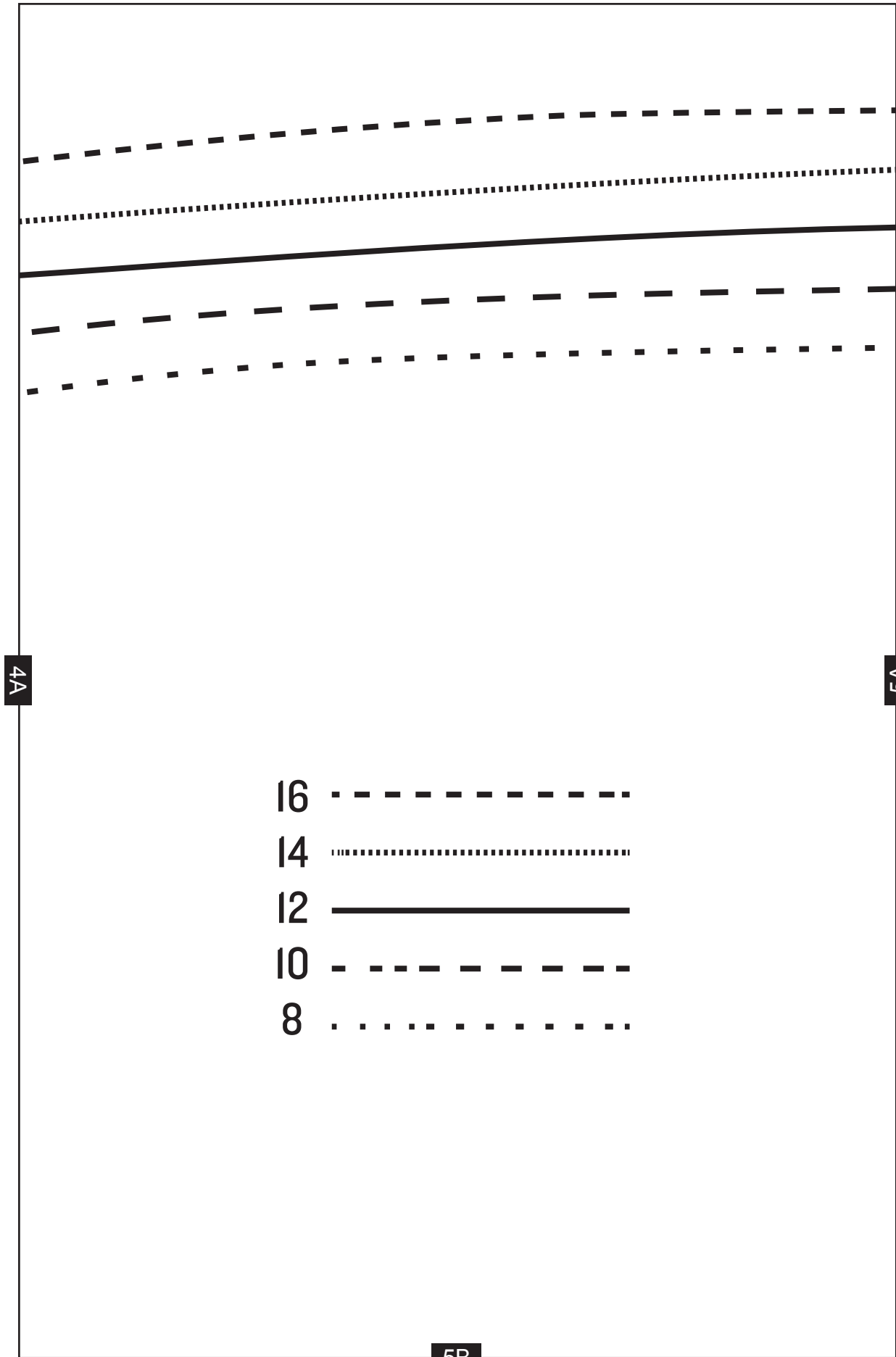
3B

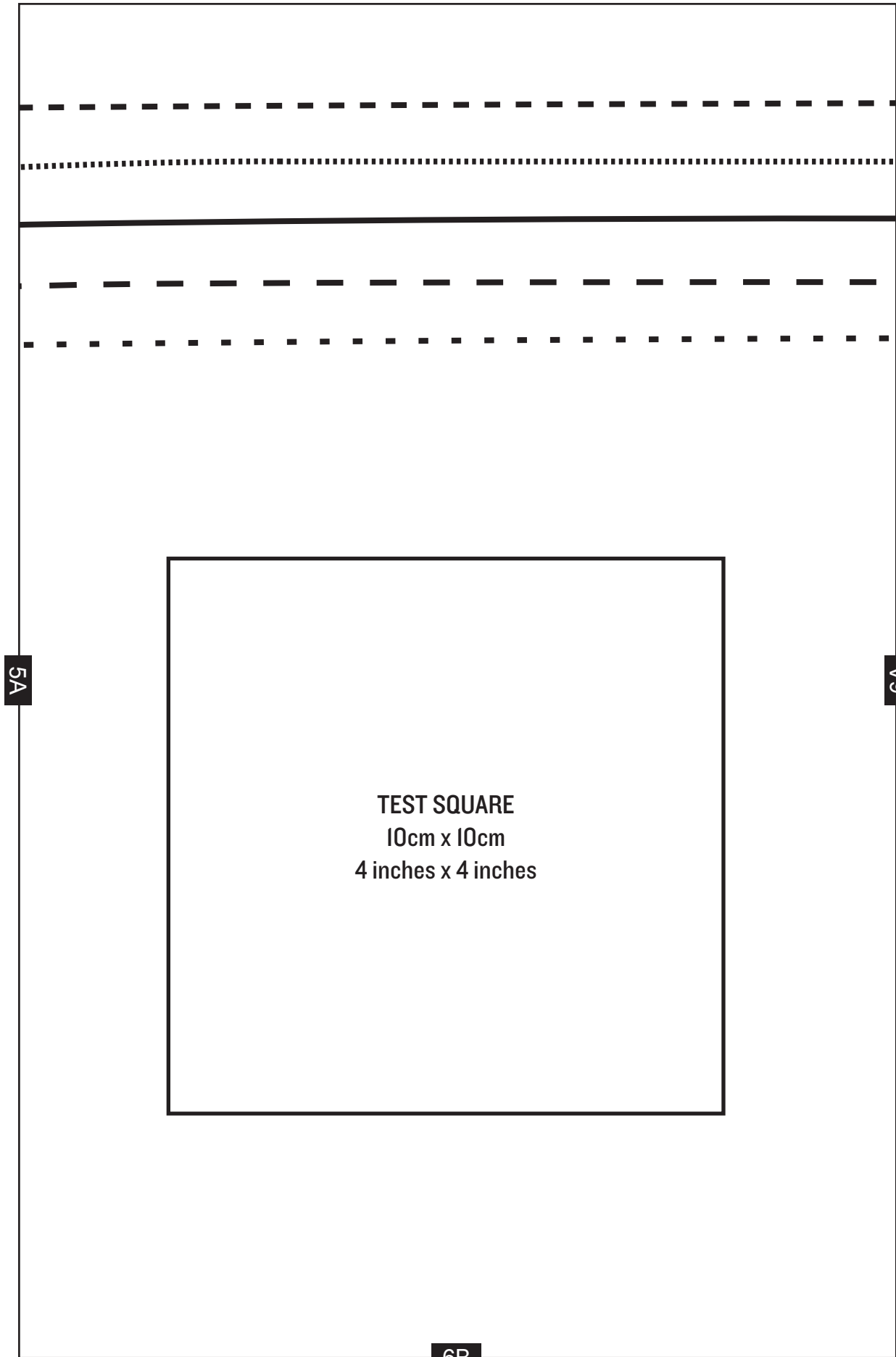


3A

4A

4B



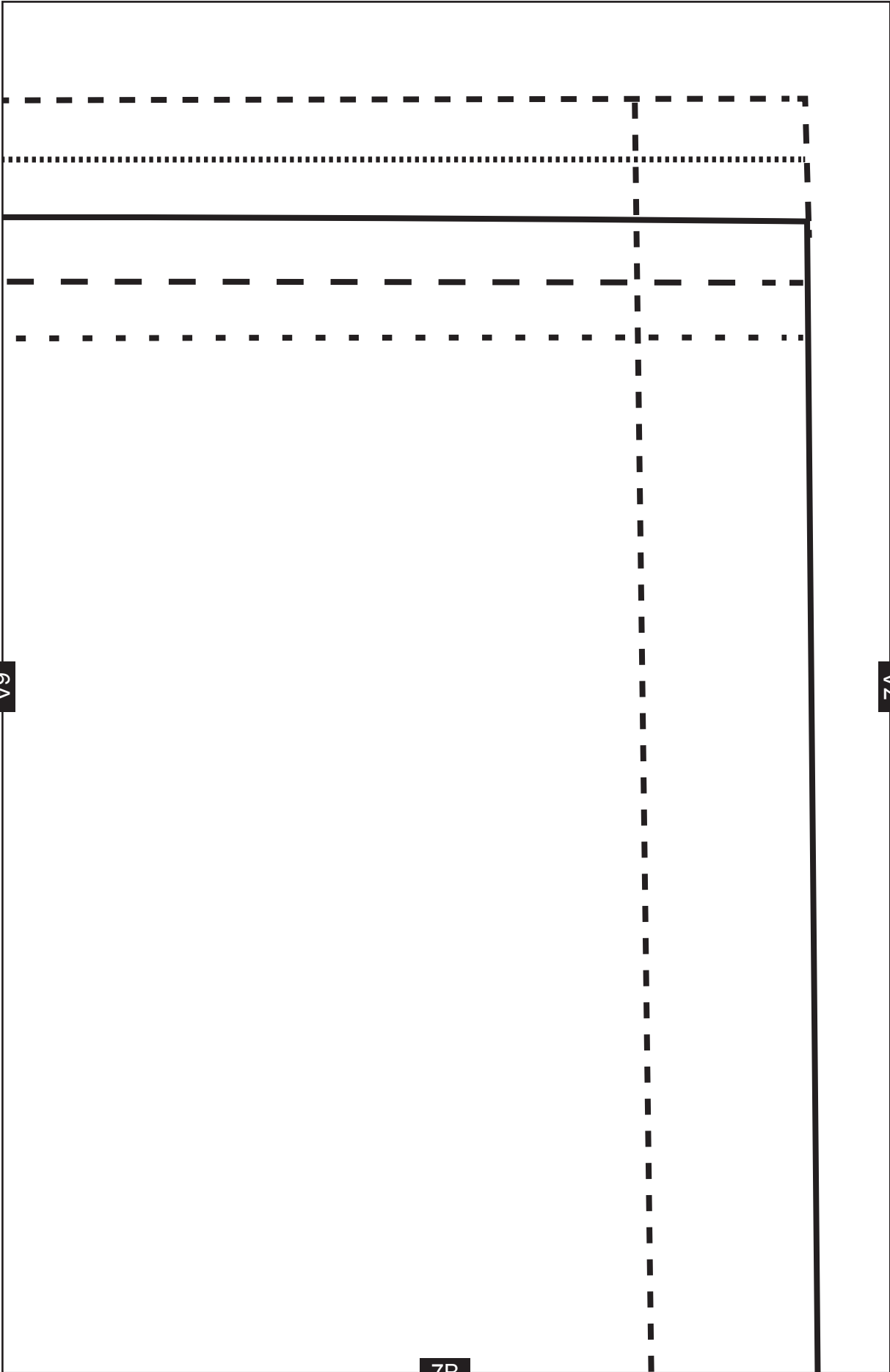


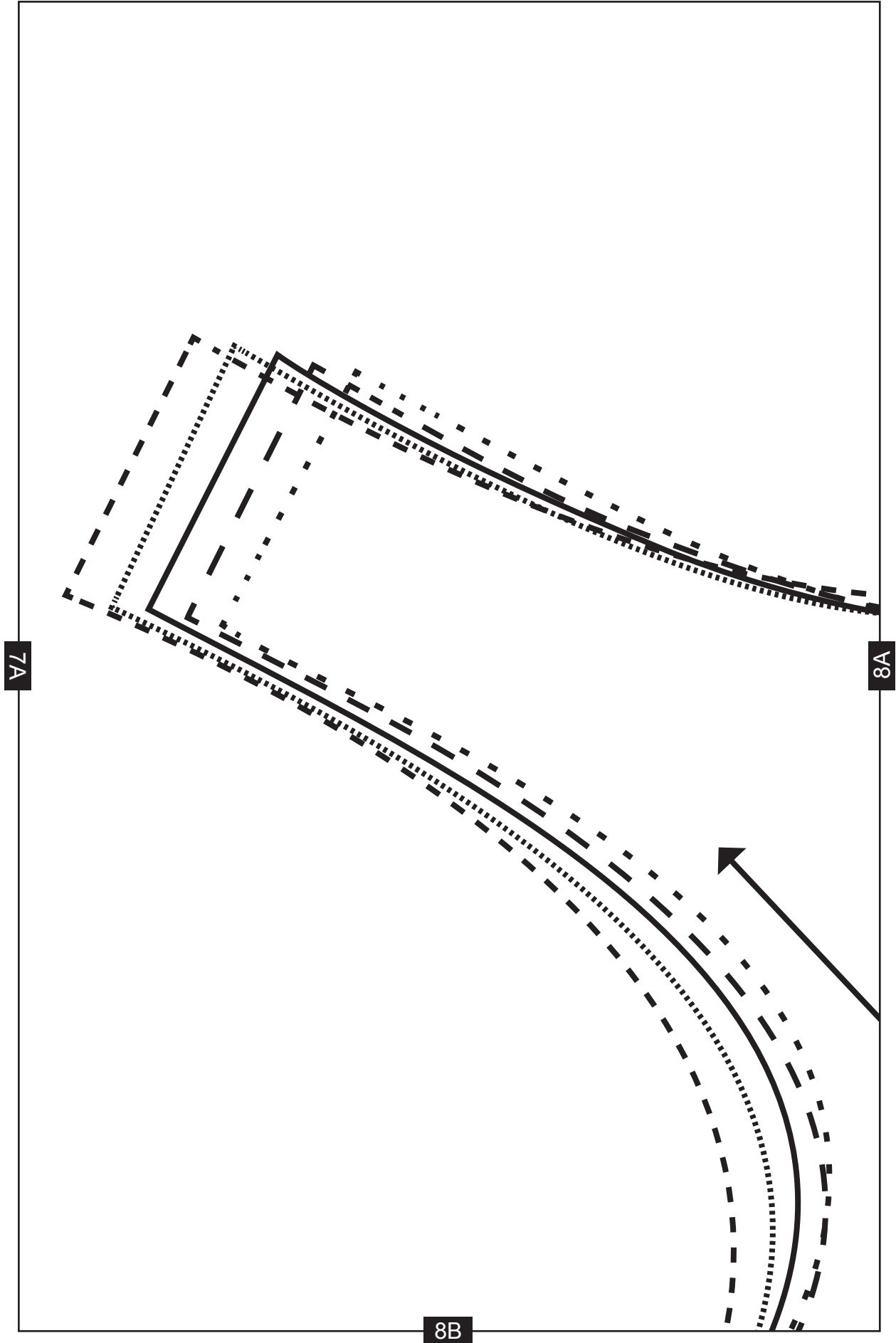
5A

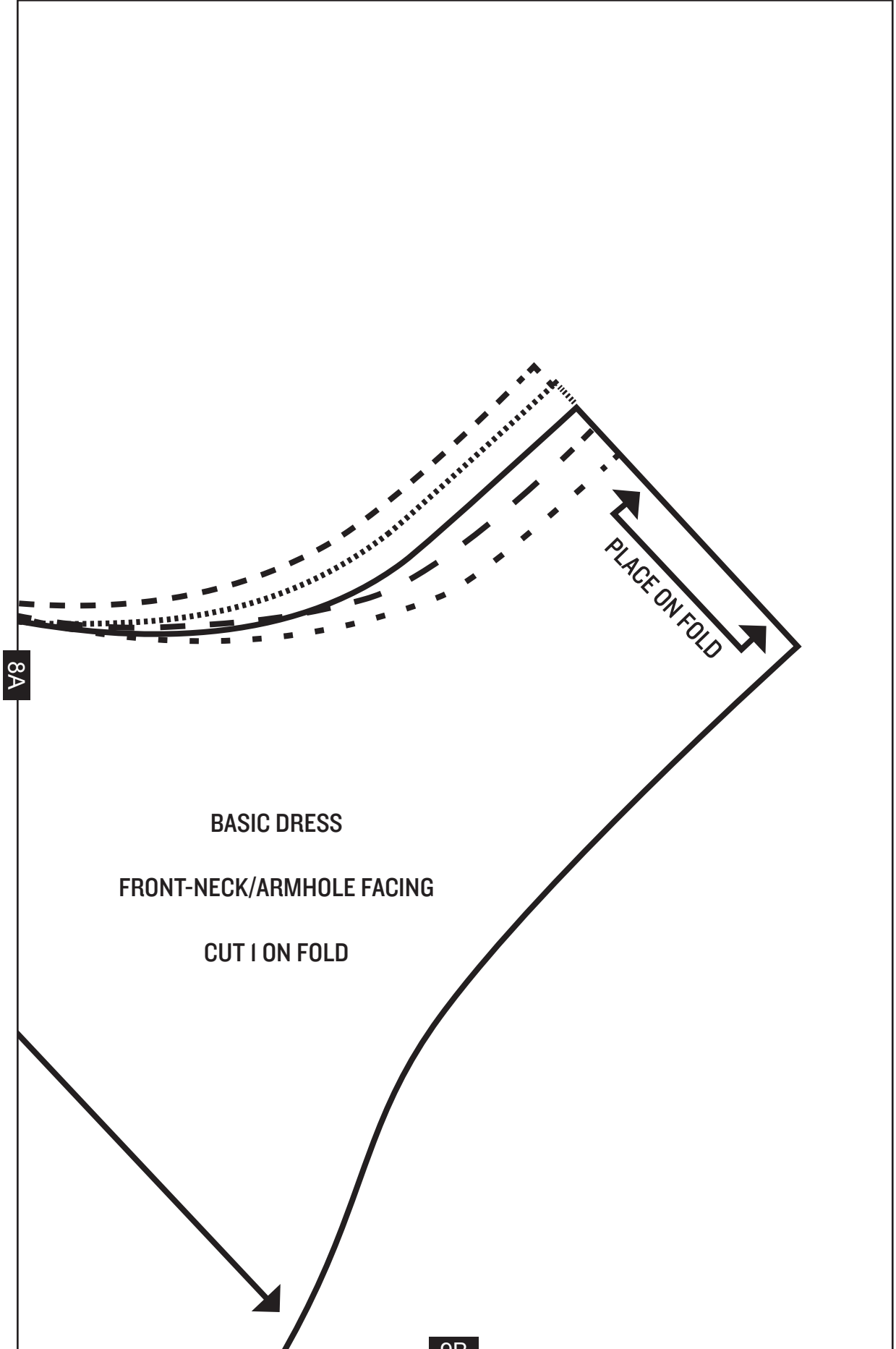
6A

TEST SQUARE
10cm x 10cm
4 inches x 4 inches

6B







8A

BASIC DRESS

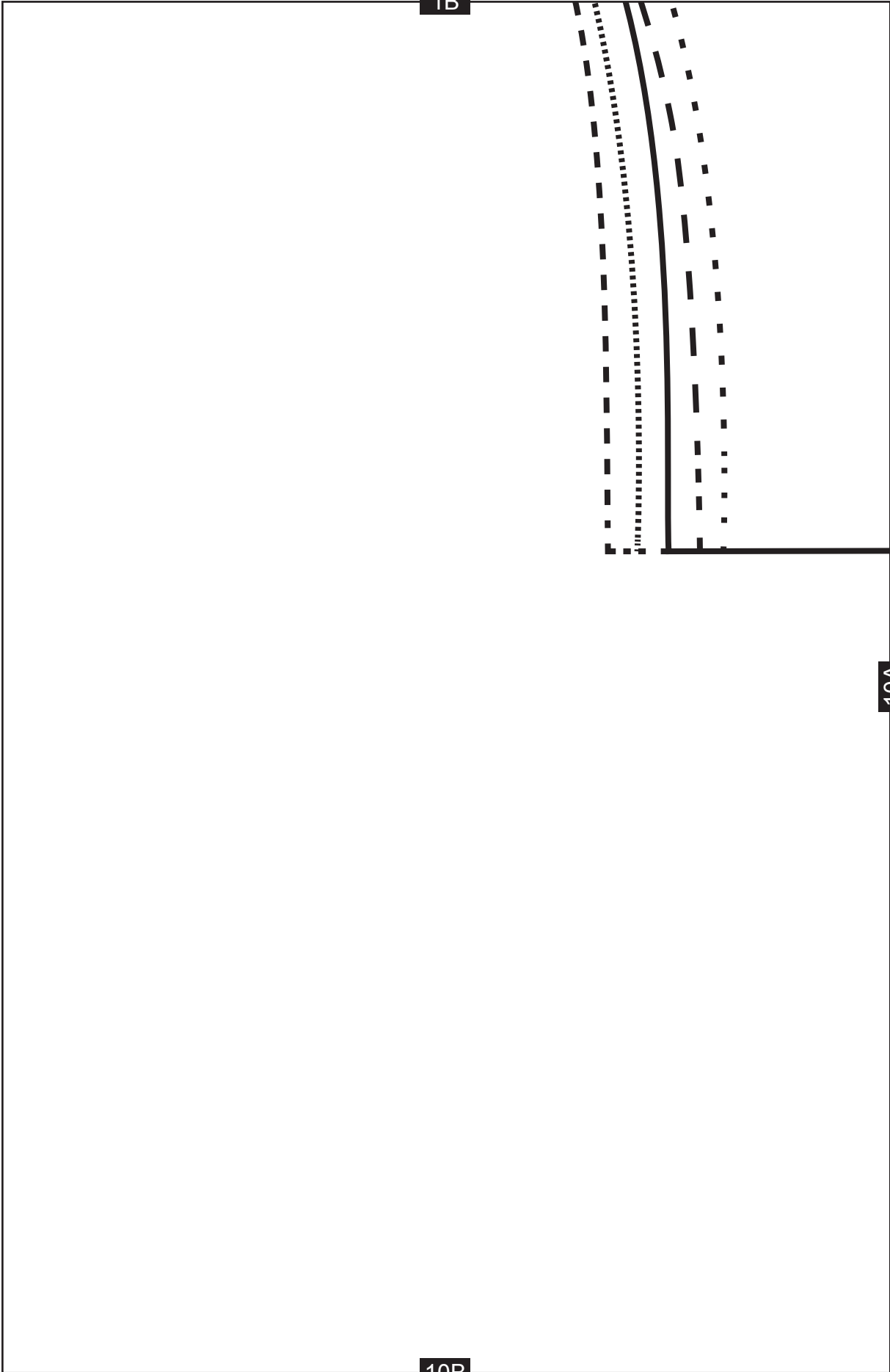
FRONT-NECK/ARMHOLE FACING

CUT | ON FOLD

PLACE ON FOLD

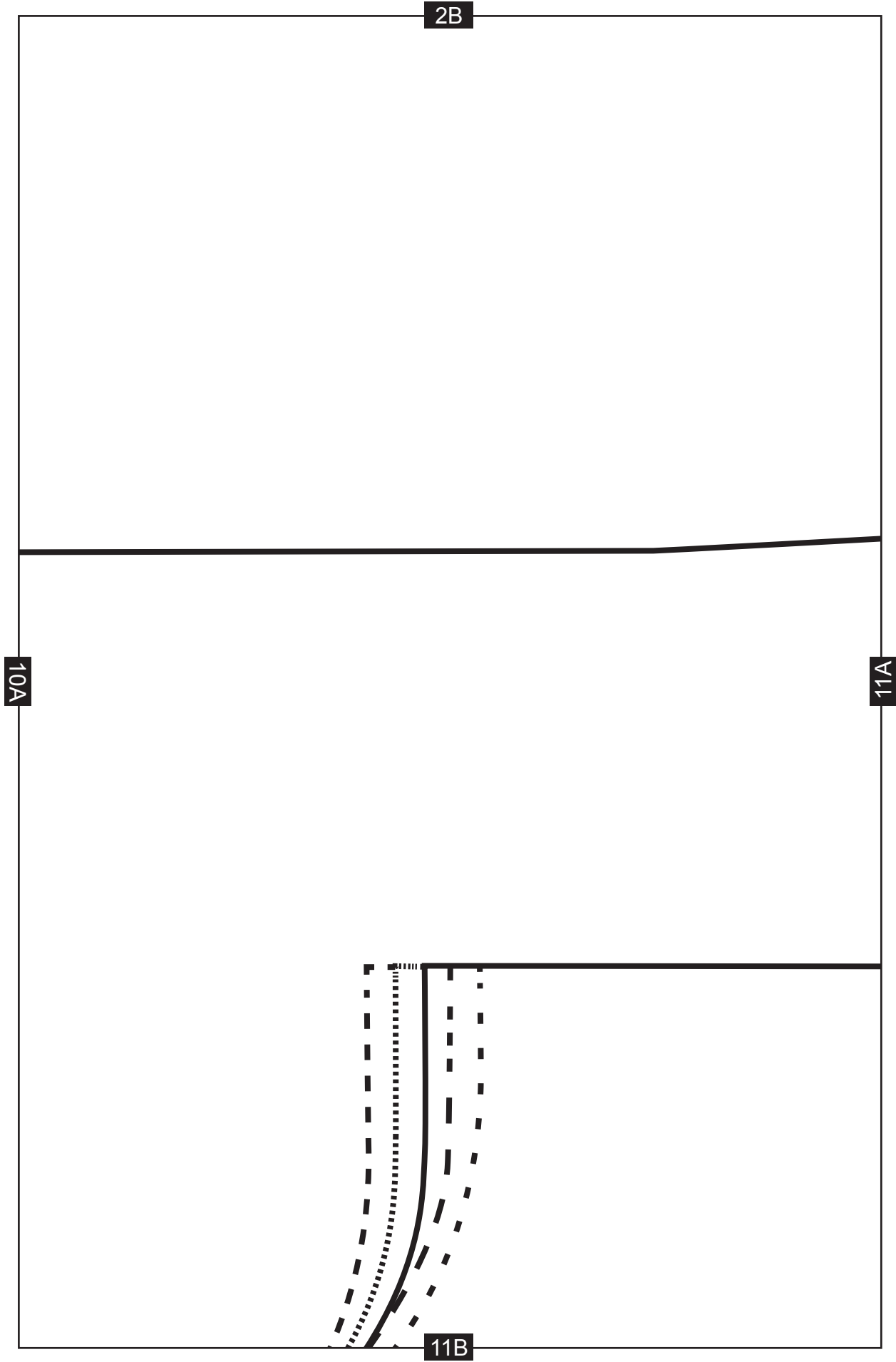
9B

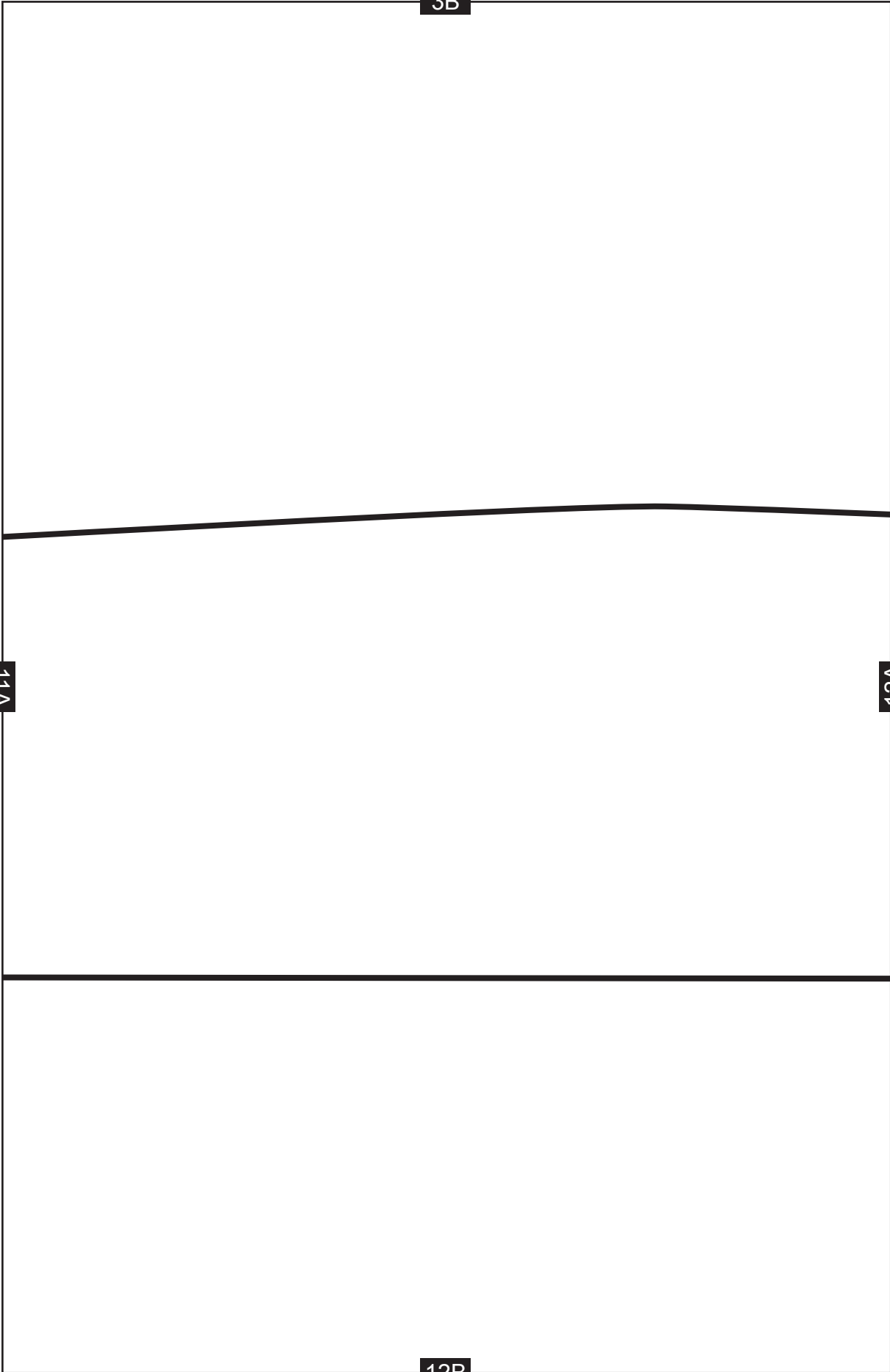
1B



10A

10B



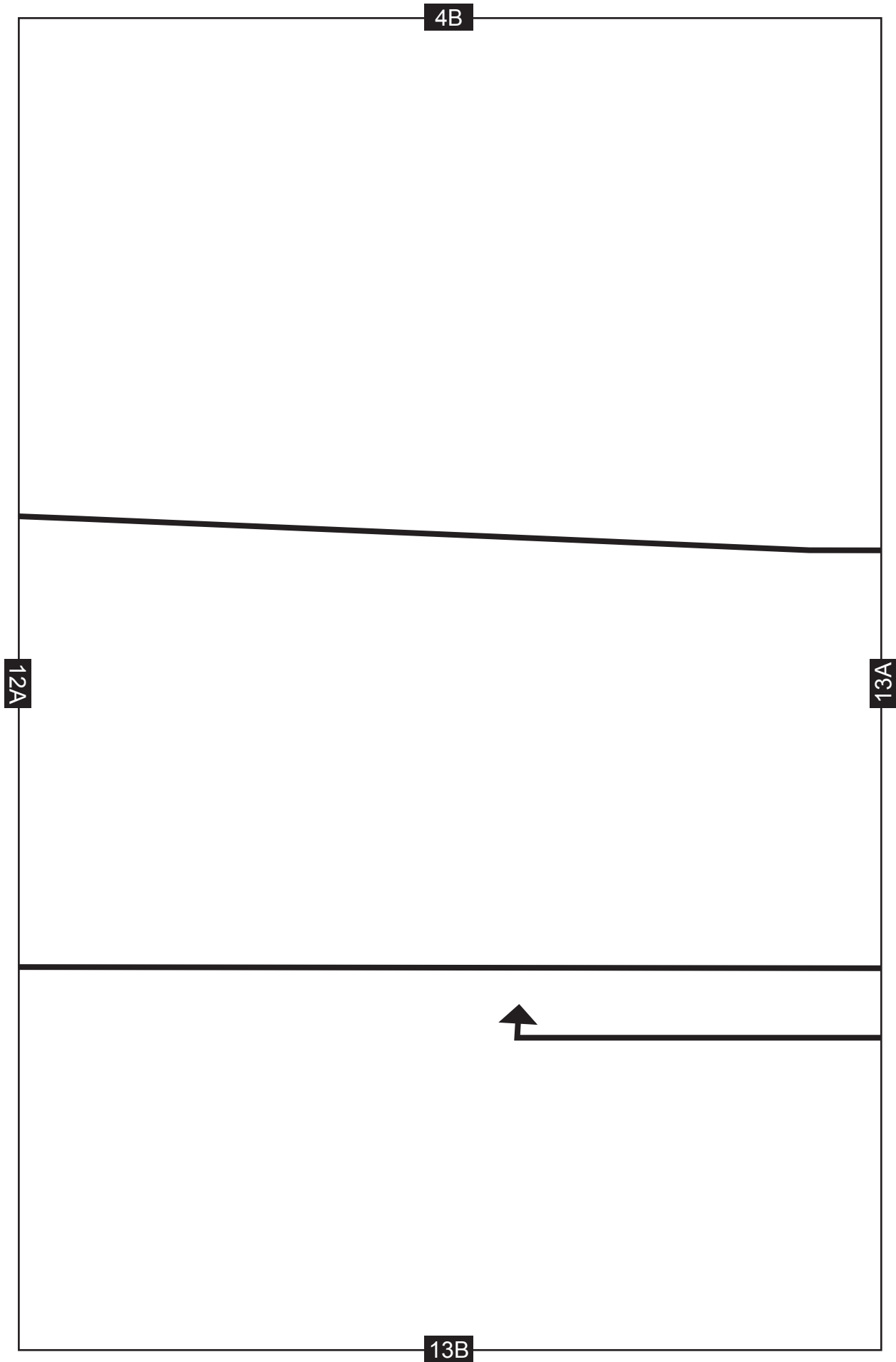


3B

11A

12A

12B



5B



13A

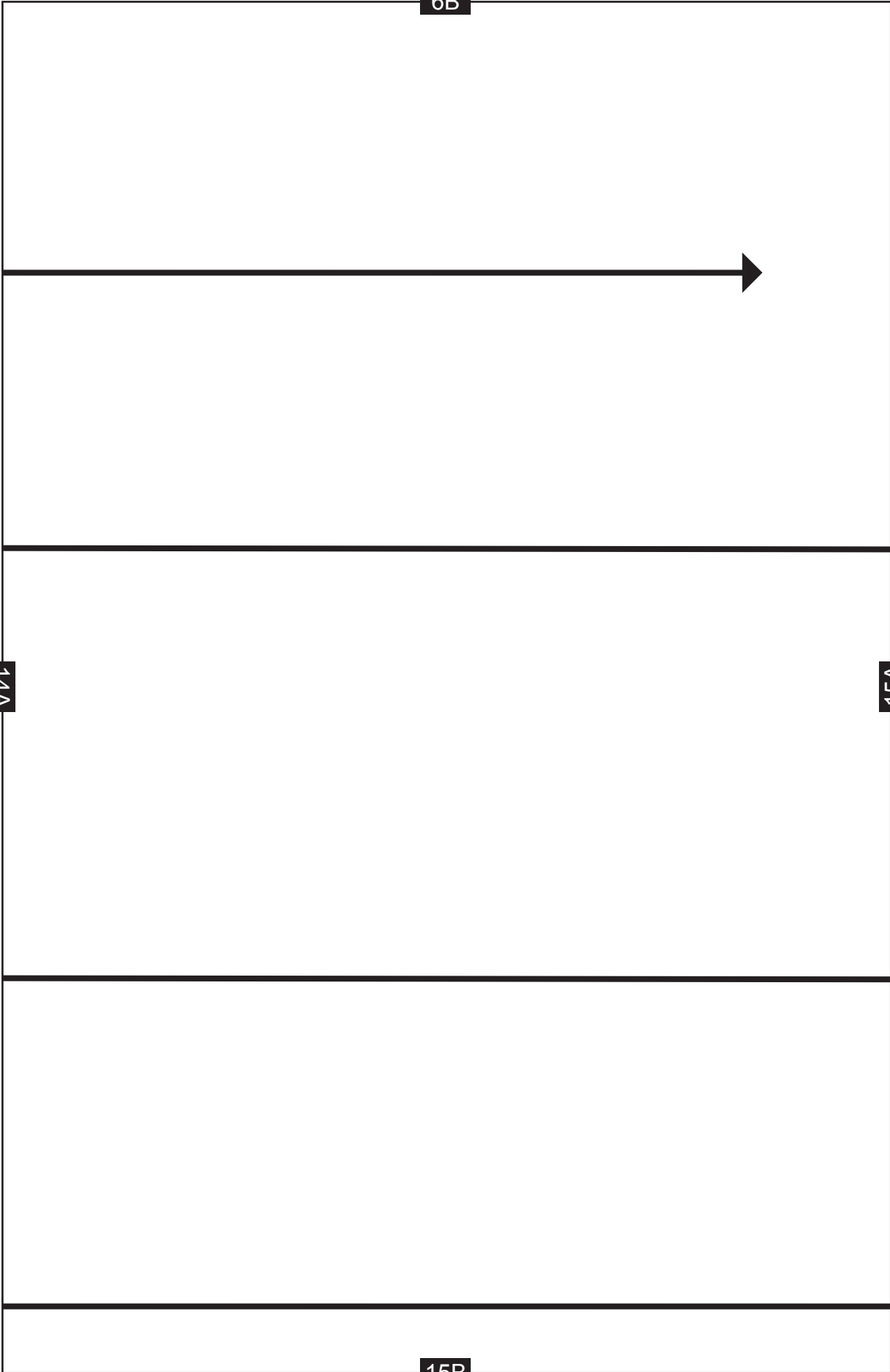
14A

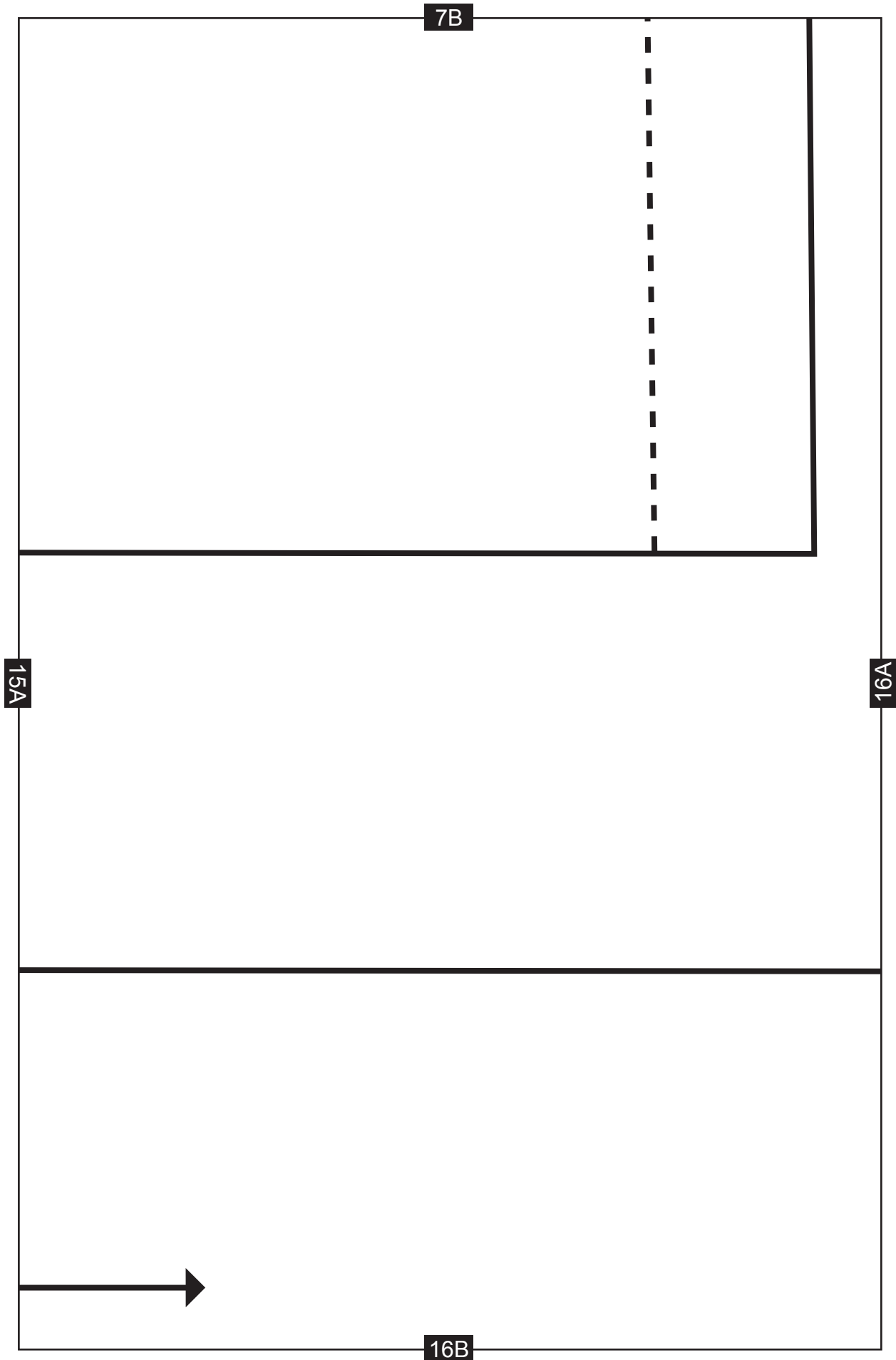


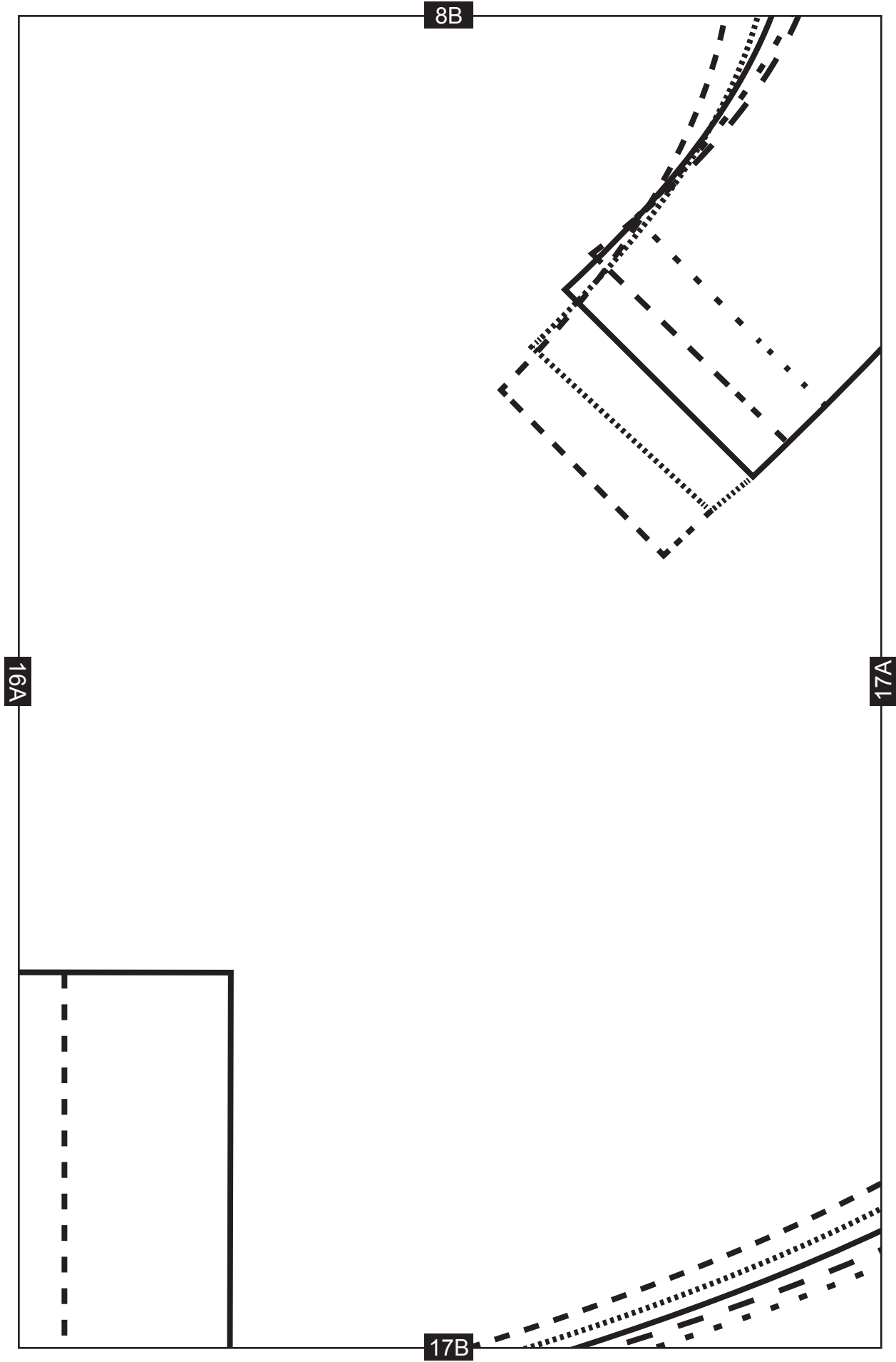
PLACE ON FOLD

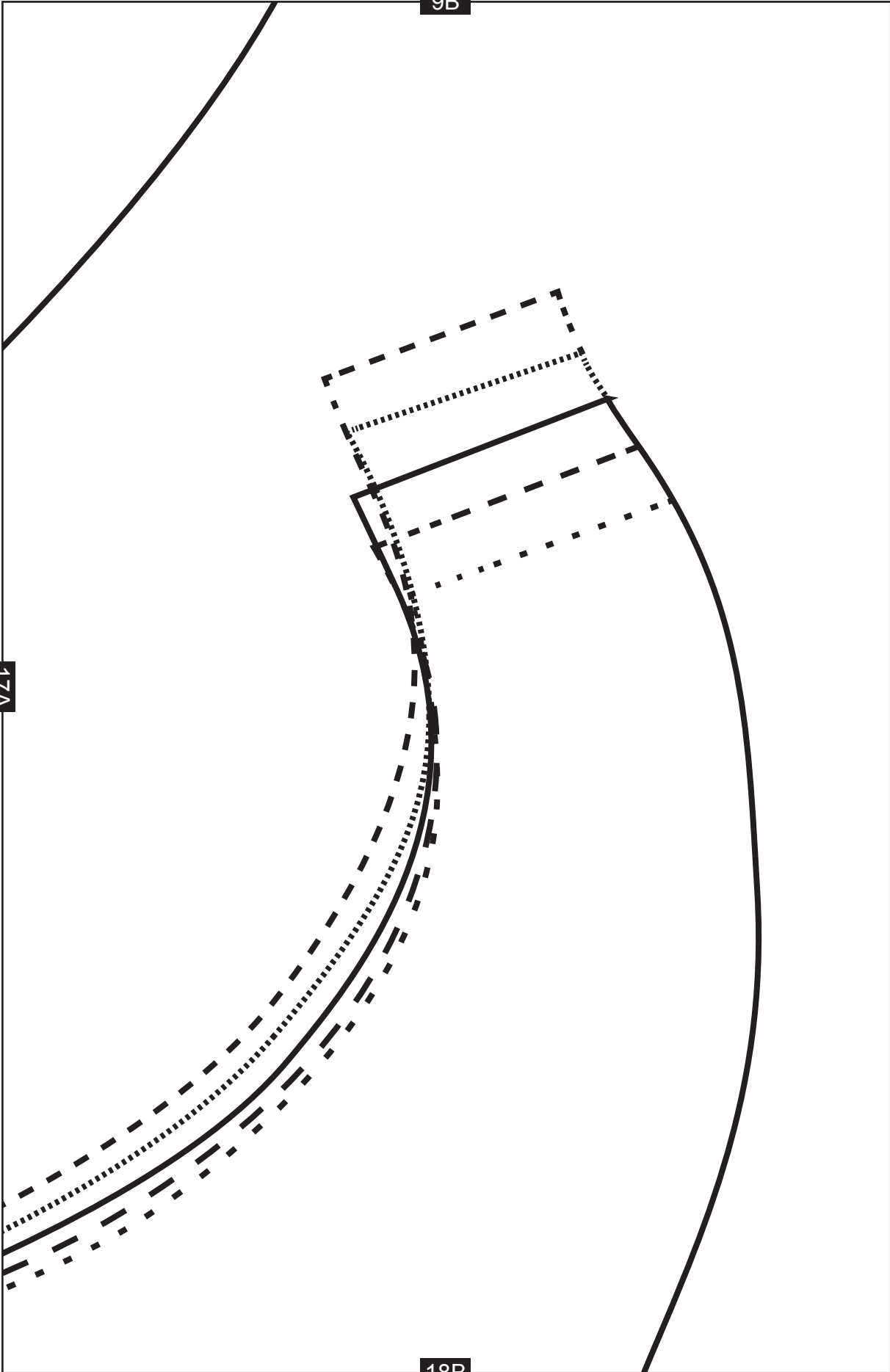


14B

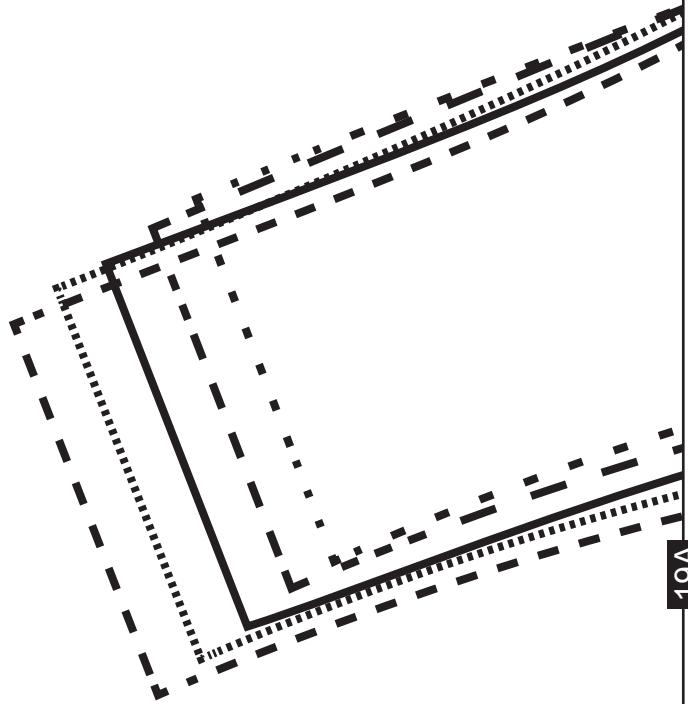




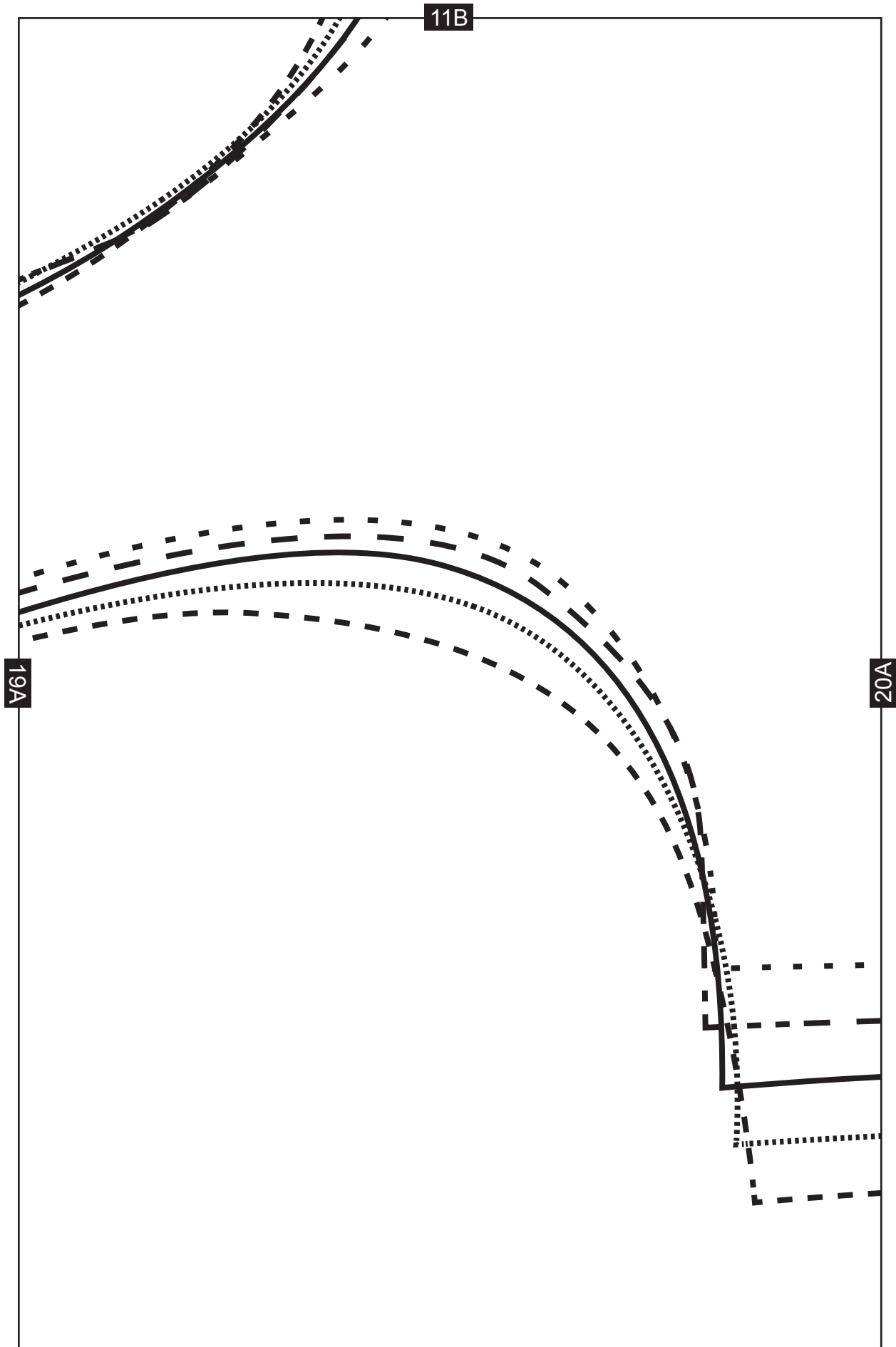


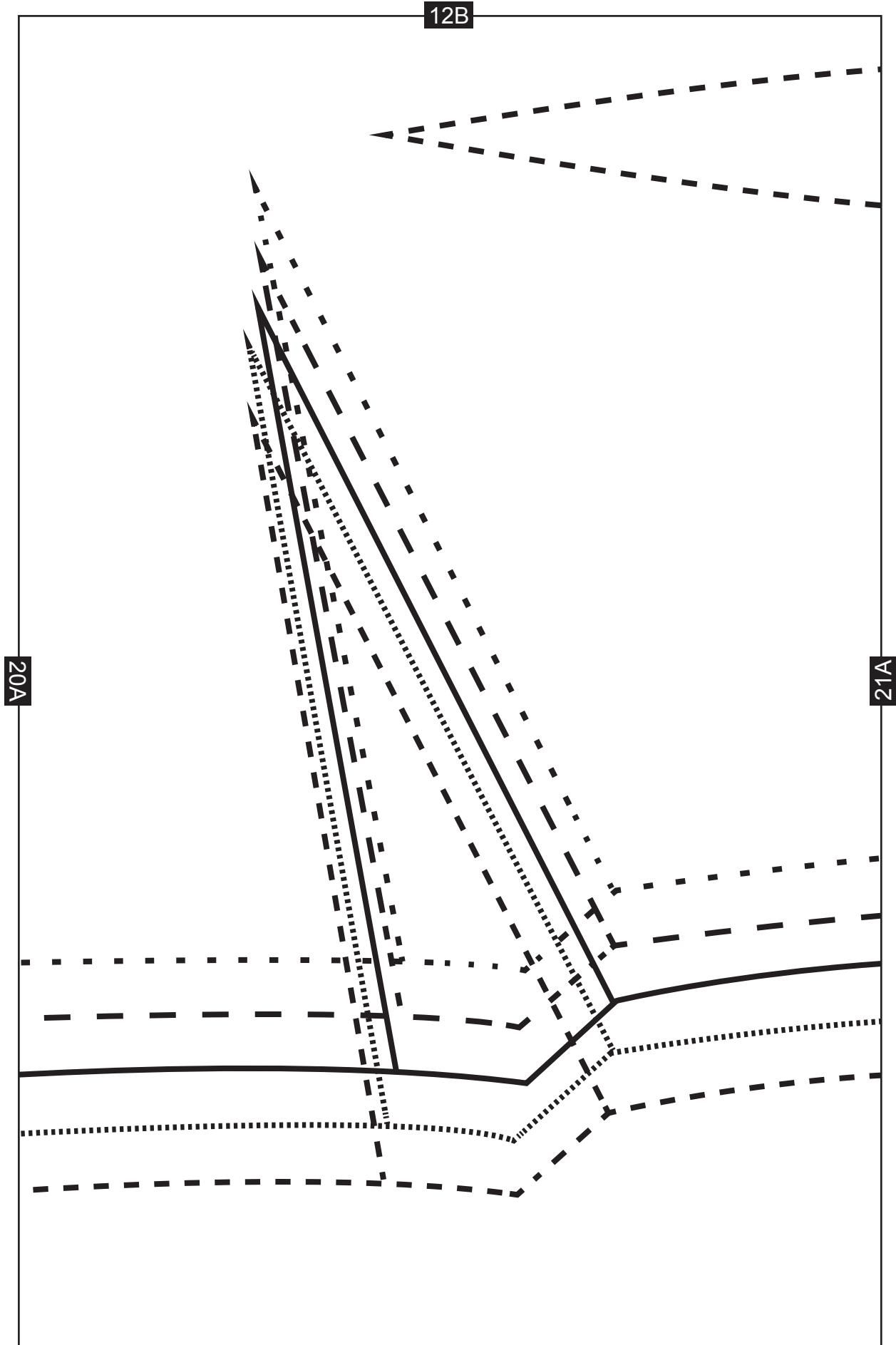


10B

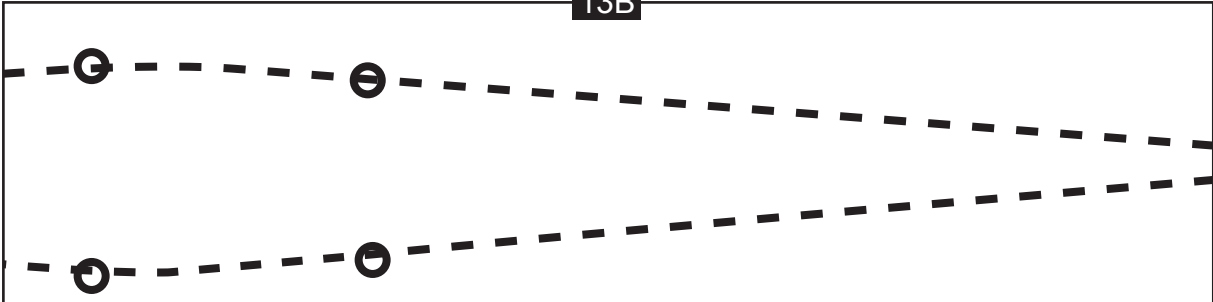


19A





13B



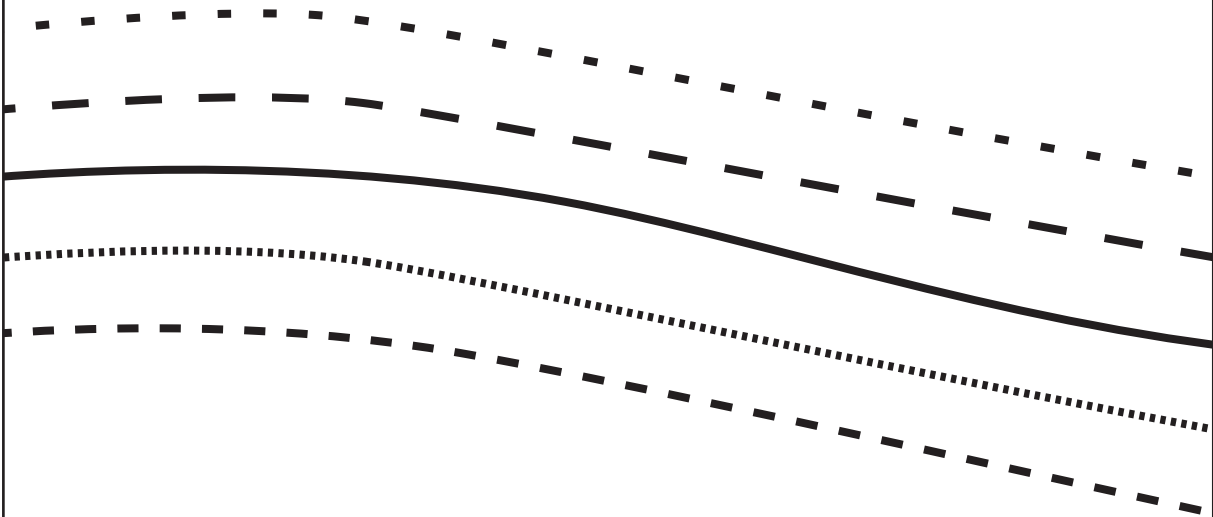
BASIC DRESS

FRONT

CUT 1 ON FOLD

21A

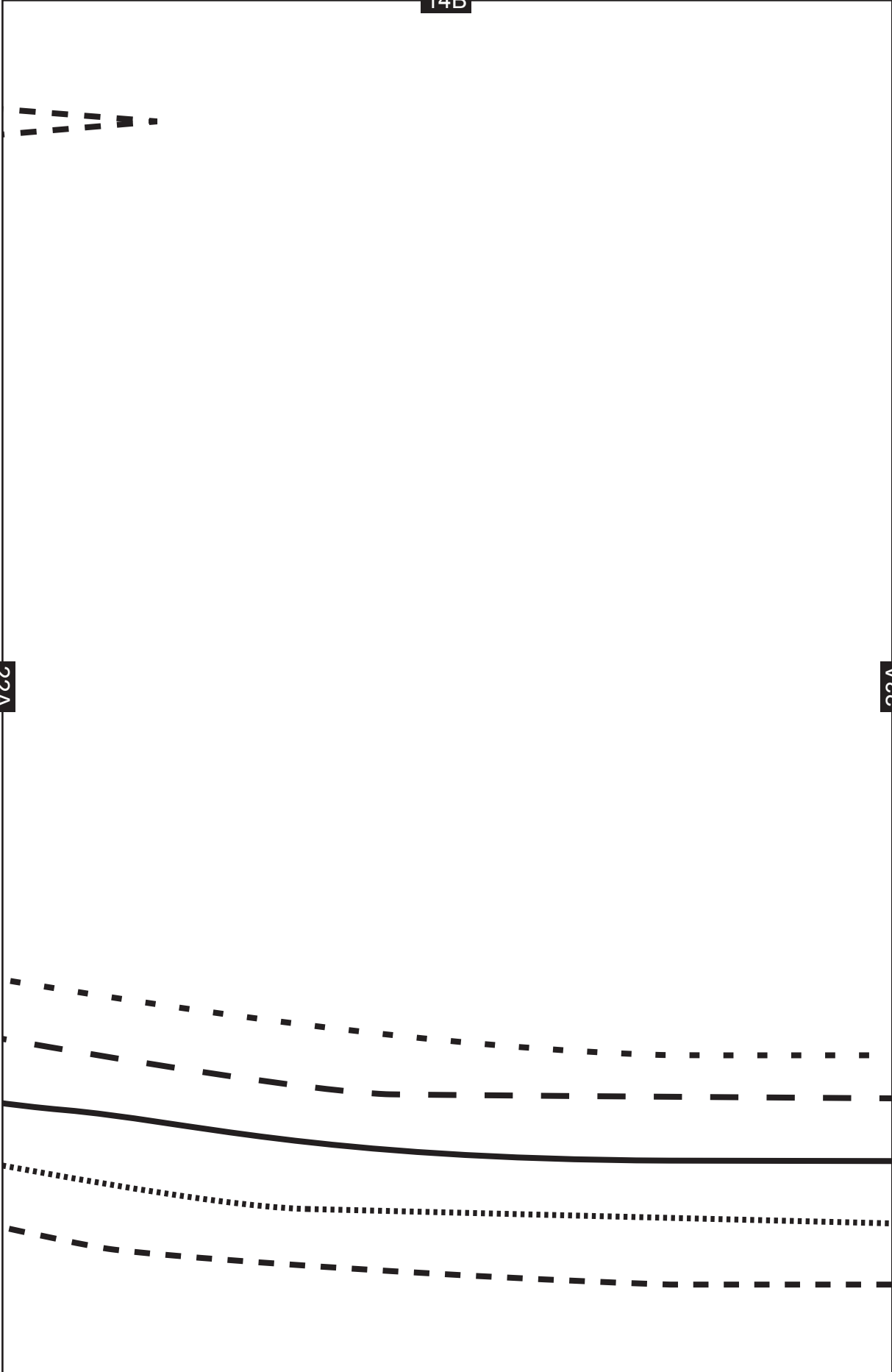
22A



14B

22A

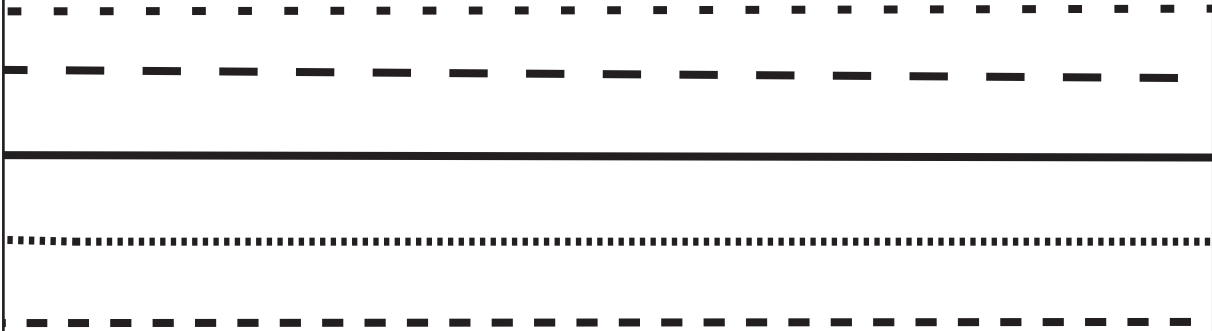
23A



15B

23A

24A



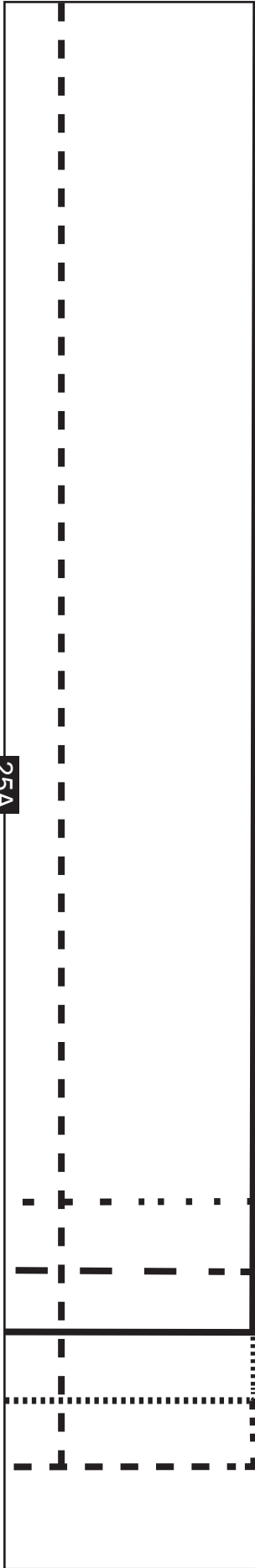
16B

24A

25A



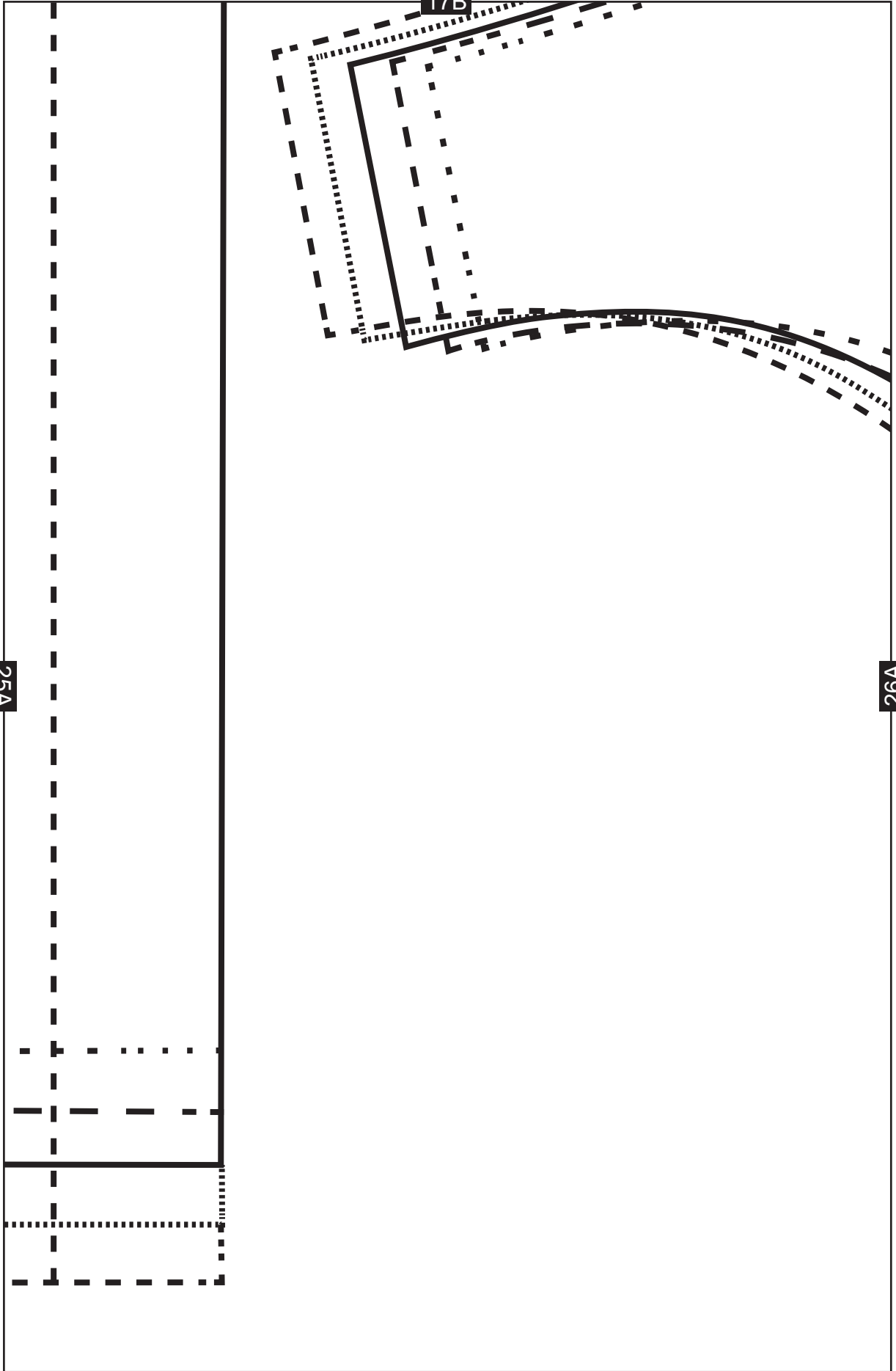
25A



17B



26A



18A

BASIC DRESS

BACK-NECK/ARMHOLE FACING

CUT I

26A

